

April 2013

# Keep Montgomery County Beautiful Anti-Litter Campaign

## Adopt-a-County Road \* Adopt a Highway

### In This Issue

[Give Aways!](#)

[Downstream Impacts of Litter](#)

[Spread the Word](#)

[Report a Litterer](#)

### Quick Links

[Keep Montgomery County Beautiful](#)

[Join Our Mailing List!](#)

Dear Charlotte,

It's been a while since the first newsletter but there has been a lot going on. We now have nine enthusiastic and talented presenters trained and ready to provide a 15-30 minute educational program to your group.

If you've already adopted a road and need a boost and reminder of the importance of what you are doing, or if you haven't yet made the commitment to a road, these young adults will inspire you!

Contact Charlotte Harris (832-567-3404) or Sharon Craig (936-689-6585) for more information or to schedule a presentation.

### Car Litter Bags and Bumper Stickers



Would members of your Adopt a Road team like litter bags for their cars or Don't Mess with Texas bumper stickers?

Email [info@kmcbbtexas.org](mailto:info@kmcbbtexas.org) or call Charlotte and we'll get some to you.

### Litter Doesn't Stay Where It's Thrown



It travels down waterways into our oceans and seriously impacts fish, wildlife and ultimately our food chain. Here are links to some sobering information about the significance of this problem. Please note that some of these are very disturbing, especially the first one.

[MIDWAY : trailer : a film by Chris Jordan](#)

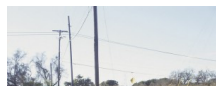
[Underwater - Comal River, New Braunfels](#)

[Trashed](#)

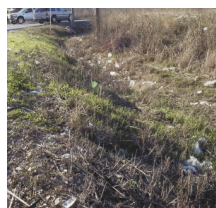
Please watch and share this information. We all need to feel a sense of urgency about this problem - and it is one we can have direct control over by not littering and being sure none of our family and friends litter.

And you are each making a significant difference by regularly picking up the litter thrown on your adopted road.

### Spread the Word



We have a lot of county and state roads in our area that are open for adoption. One of the best



ways to recruit groups to adopt is to ask them directly. If you have connections with a church, school, homeowners association, business or other group on a road that particularly needs to be adopted, talk to them and promote this program.

We are happy to contact local businesses on a road that needs attention but there's nothing like someone who is already doing it to recruit others!

Precinct 2 has identified roads they see has high impact areas and we are working to locate businesses along them to adopt but welcome input and support from you veterans!

## Report a Litterer



Don't forget to report litterers through the TxDOT Report a Litterer program. It's simple - if you see someone littering go to [www.dontmesswithtexas.org](http://www.dontmesswithtexas.org) and complete a form with the following info:

- Date
- Time
- Location
- Make of Car
- License Plate
- What was Littered?
  - Food Trash
  - Cigarette
  - Cup/Can/Bottle
  - Misc Trash
- Who littered?
  - Driver
  - Passenger
  - Truck Bed

The reported litterer will receive a litter bag for their car and a letter from TxDOT asking them not to litter. There is also an app available for reporting - check out the website for information about that.

Keep Montgomery County Beautiful (KMCB) is a grassroots, non-profit organization dedicated to providing a network for and resources to organizations in Montgomery County who are committed to the beautification and improvement of our county's natural resources.

We are very excited about this initiative and are very proud of the youth with whom we are working.

Sincerely,

**Charlotte Riser Harris**  
**KMCB Board Chair**  
**832-567-3404**  
**[kmbctexas@yahoo.com](mailto:kmbctexas@yahoo.com)**

[Forward this email](#)



This email was sent to [kmbctexas@yahoo.com](mailto:kmbctexas@yahoo.com) by [kmbctexas@yahoo.com](mailto:kmbctexas@yahoo.com) |

[Update Profile/Email Address](#) | Instant removal with [SafeUnsubscribe™](#) | [Privacy Policy](#).

Keep Montgomery County Beautiful | 6606 FM 1488 | Suite 148, #356 | Magnolia | TX | 77354